

# WARMING TRENDS®

## GAS INSERT KITS FOR PAVER FIRE PITS



2024 CONTRACTOR PRICING  
CHECK OUT OUR WEBSITE FOR FULL PRICE LIST

Visit us online at [Warming-Trends.com](https://warming-trends.com) for more information and pricing  
or call **303-346-2224** to speak with one of our Flame Specialists today.



# WARMING TRENDS GAS INSERTS

---

Warming Trends® makes it easy to install or convert a paver fire pit to gas with our gas insert kits. Each kit includes the CROSSFIRE® Brass Burner which utilizes cutting-edge jet technology to produce a taller, brighter, and more natural flame – all while consuming less gas. Warming Trends® Universal and Specialized Gas Insert Kits are designed to work with a variety of paver company block kits, including everything needed to convert your paver fire pit.

## OPTIONAL IGNITION SYSTEMS

---

- Push Button Ignition (PBIK)
- Mercury Ignition (MERC)
- 3 Volt (3VIK)
- Standard 24V (24VIK)
- Platinum Automatic 24V Ignition

Light your Fire Feature with the simplicity of a match or choose a fully automatic ignition system.



## UNIVERSAL GAS INSERT KITS

---

Warming Trends Gas Inserts are designed to let you easily create a stunning fire feature in an existing or new paver block pit. Each kit includes everything needed to quickly and easily convert to a gas system.

### INCLUDED IN EACH KIT:

- CROSSFIRE® Brass Burner
- Aluminum Plate
- Flex Line Kit
- Key Valve Kit
- Collars



*CFB180 on Circular Plate*

Find out which Ignition System  
is compatible for your project.



CIRCULAR OPENINGS

23" - 26"  
Circular  
Opening

|  |
|--|
| UPK120C23NG   UPK120C23LP  |
| CFB120 Original Brass Burner with WATERSTOP™<br>23" Circular Aluminum Plate<br>Flex Line/Key Valve Kit<br>Key Valve Extension<br>(4) Collars |
| \$951.00   |

29" - 32"  
Circular  
Opening

|   |
|---|
| UPK180C29NG   UPK180C29LP   |
| CFB180 Original Brass Burner with WATERSTOP<br>29" Circular Aluminum Plate<br>Flex Line/Key Valve Kit<br>Key Valve Extension<br>(5) Collars |
| \$1386.00   |

35" - 38"  
Circular  
Opening

|   |
|---|
| UPK240C35NG   UPK240C35LP   |
| CFB240 Original Brass Burner with WATERSTOP<br>35" Circular Aluminum Plate<br>Flex Line/Key Valve Kit<br>Key Valve Extension<br>(6) Collars |
| \$1667.00   |

39" - 42"  
Circular  
Opening

|   |
|---|
| UPK240C39NG   UPK240C39LP   |
| CFB240 Original Brass Burner with WATERSTOP<br>39" Circular Aluminum Plate<br>Flex Line/Key Valve Kit<br>Key Valve Extension<br>(7) Collars |
| \$1799.00   |

SQUARE OPENINGS

23" - 26"  
Square  
Opening

|   |
|---|
| UPK120S23NG   UPK120S23LP   |
| CFB120 Original Brass Burner with WATERSTOP<br>23" Square Aluminum Plate<br>Flex Line/Key Valve Kit<br>Key Valve Extension<br>(4) Collars |
| \$951.00  |

26" - 29"  
Square  
Opening

|   |
|---|
| UPK120S26NG   UPK120S26LP   |
| CFB120 Original Brass Burner with WATERSTOP<br>26" Square Aluminum Plate<br>Flex Line/Key Valve Kit<br>Key Valve Extension<br>(4) Collars |
| \$991.00  |

29" - 32"  
Square  
Opening

|   |
|---|
| UPK180S29NG   UPK180S29LP   |
| CFB180 Original Brass Burner with WATERSTOP<br>29" Square Aluminum Plate<br>Flex Line/Key Valve Kit<br>Key Valve Extension<br>(5) Collars |
| \$1386.00   |

35" - 38"  
Square  
Opening

|   |
|---|
| UPK240S35NG   UPK240S35LP   |
| CFB240 Original Brass Burner with WATERSTOP<br>35" Square Aluminum Plate<br>Flex Line/Key Valve Kit<br>Key Valve Extension<br>(6) Collars |
| \$1667.00   |

39" - 42"  
Square  
Opening

|   |
|---|
| UPK240S39NG   UPK240S39LP   |
| CFB240 Original Brass Burner with WATERSTOP<br>39" Square Aluminum Plate<br>Flex Line/Key Valve Kit<br>Key Valve Extension<br>(7) Collars |
| \$1799.00   |



SPECIALIZED GAS INSERT KITS

2024 CONTRACTOR PRICING  
CHECK OUT OUR WEBSITE FOR FULL PRICE LIST

The All-New Specialized Gas Insert Kits fit top-selling paver fire pit brands and are easier to install than ever before! The Mounting Brackets and Collars have been re-engineered to eliminate the need for a drill to install. Each kit includes all components needed to create an exceptional fire feature including the patented CROSSFIRE™ burner, aluminum plate, no-drill collars, specifically sized vents, and mounting bracket which replace a block while still offering support to the blocks above and a Flex Line/ Key Valve Kit.

SPECIALIZED GAS INSERT KITS INCLUDE:

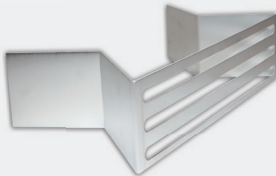
- CROSSFIRE® Brass Burner
- Aluminum Plate
- Specifically-sized Mounting Bracket and Vents
- Flexible, No Drill Collars
- Flex Line / Key Valve Kit



Raffinato Block Kit and components pictured



Flexible, No Drill Collars install between blocks.



Vents are sized perfectly to replace a block and support the block above.



Redesigned Mounting Bracket eliminates need to drill through block to mount Key Valve.

Valencia  
Gas Insert

| UPKVLLP   UPKVLNG   |
|---|
| CFB180 Original Brass Burner with WATERSTOP™<br>29" Circular Aluminum Plate<br>Flex Line/Key Valve Kit<br>9 1/4" x 3" Mounting Bracket<br>(5) Flexible, No Drill Collars<br>(2) 9 1/4" x 3" Vents |
| \$1522.00   |

Raffinato  
Gas Insert

| UPKRRNG   UPKRRLP   |
|---|
| CFBH160 H-Style Brass Burner with WATERSTOP<br>32" x 17 3/4" Rectangular Aluminum Plate<br>Flex Line/Key Valve Kit<br>14" x 3 1/2" Mounting Bracket<br>(5) Flexible, No Drill Collars<br>(2) 14" x 3 1/2" Vents |
| \$1631.00   |

Polycor  
Gas Insert

| 103446NG   103447LP   |
|---|
| CFBH160 H-Style Brass Burner with WATERSTOP<br>42 1/2" x 13 1/2" Rectangular Aluminum Plate<br>Flex Line/Key Valve Kit<br>14 1/2" x 5" Mounting Bracket<br>(4) Flexible, No Drill Collars<br>(2) 14 1/2" x 5" Vents |
| \$1790.00   |

Polycor  
Gas Insert

| 103441NG   103442LP  |
|--|
| CFB180 Original Brass Burner with WATERSTOP<br>28" Square Aluminum Plate<br>Flex Line/Key Valve Kit<br>14 1/2" x 5" Mounting Bracket<br>(4) Flexible, No Drill Collars<br>(2) 14 1/2" x 5" Vents |
| \$1700.00  |

Weston  
Gas Insert

| UPKBWLP   UPKBWNG  |
|--|
| CFB240 Original Brass Burner with WATERSTOP<br>39" Circular Aluminum Plate<br>Flex Line/Key Valve Kit<br>11 3/8" x 4" Mounting Bracket<br>(6) Flexible, No Drill Collars<br>(2) 11 3/8" x 4" Vents |
| \$1965.00  |

Prescott  
Gas Insert

| UPKPSLP   UPKPSNG  |
|--|
| CFB180 Original Brass Burner with WATERSTOP<br>27 1/4" Square Aluminum Plate<br>Flex Line/Key Valve Kit<br>9" x 4 1/2" Mounting Bracket<br>(6) Flexible, No Drill Collars<br>(2) 9" x 4 1/2" Vents |
| \$1638.00  |

Brandon  
Gas Insert

| UPKBSLP   UPKBSNG  |
|--|
| CFB180 Original Brass Burner with WATERSTOP<br>27 1/4" Square Aluminum Plate<br>Flex Line/Key Valve Kit<br>14" x 3 1/2" Mounting Bracket<br>(6) Flexible, No Drill Collars<br>(2) 14" x 3 1/2" Vents |
| \$1638.00  |

View the most up-to-date Plates,  
Pans, and Covers page.

