

HARDSCAPE LIGHTS FOR WALLS, STEPS & OUTDOOR KITCHENS



TS-A6000-BRZ/BLK \$46.55
Replaceable LED Step & Wall Light

Designed to illuminate walls, steps, and outdoor kitchens. Available in a 7" width

- 1 Watt
- 75 Lumens
- Replaceable integrated LED light module
- 2700 Kelvin Light Temperature
- Constructed of Powder Coated Aluminum with Bronze or Black finish



TS-MA6000-GRY \$46.55
Modern Hardscape Light

A modernized look to our classic step and wall light with a higher Kelvin light temperature

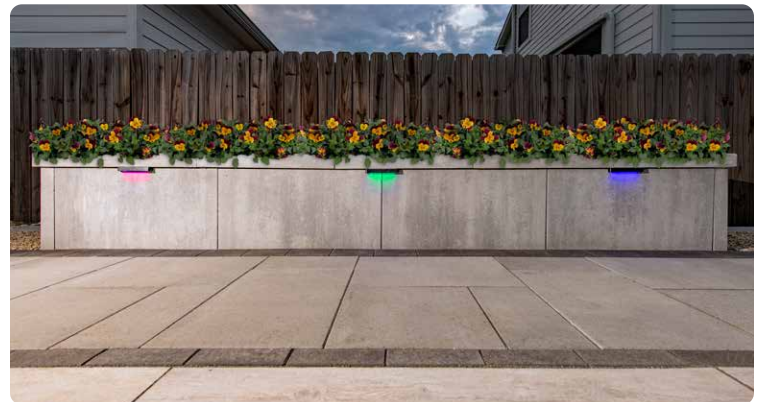
- 1 Watt
- 78 Lumens
- Replaceable integrated LED light module
- 4000 Kelvin Light Temperature
- Constructed of Powder Coated Aluminum with Gray finish



TS-A6000C-BRZ/BLK \$74.55
Replaceable LED Step & Wall Light

NEW TS-A6000C features RGBCW capability, Dimming and Kelvin temperature adjustment through the Tru-Scapes Smart Control App

- 1.5 Watts
- 65 Lumens at 2700K
- Replaceable integrated LED module
- Constructed of Powder Coated Aluminum with Bronze or Black Finish



PILLAR LIGHTS



TS-PL100-BRZ \$196.00
Traditional Pillar Light

Includes all components required for installation

(Mounting Base, Drill Template, Anchor Kit, Masonry Drill Bit, LED lamp and wire nuts)

- 9" x 9" x 20" h
- 360° Beam Spread LED Lamp
- 3 Watt
- 300 Lumens
- G4 Bi-Pin LED Bulb
- 2700 Kelvin Light Temperature
- Constructed of Powder Coated Aluminum with Bronze Finish



TS-PL101-BRZ/BLK \$196.00
Modern Pillar Light

Includes all components required for installation

(Mounting Base, Drill Template, Anchor Kit, Masonry Drill Bit, LED lamp and wire nuts)

- 9" x 9" x 18" h
- 360° Beam Spread LED Lamp
- 3 Watt
- 300 Lumens
- G4 Bi-Pin LED Bulb
- 2700 Kelvin Light Temperature
- Constructed of Powder Coated Aluminum with Black or Bronze Finish



TS-PL102-BRZ \$329.00
Noble Pillar Light

Includes all components required for installation

(Mounting Base, Drill Template, Anchor Kit, Masonry Drill Bit, LED lamp and wire nuts)

- 11" x 11" x 20" h
- LED lamp module with RGBCW capability plus dimming & Kelvin temperature adjustment
- 6 Watt with RGBCW capability
- 250 Lumens at 2700k
- Constructed of Powder Coated Aluminum with Bronze Finish





PAVER LIGHTS FOR PATIOS, WALKWAYS, AND DRIVEWAYS



TS-HPL-6 (\$51.80), TS-HPL-8 (\$55.30) & TS-HPL-9 (\$58.80) Traditional Low Voltage LED Paver Lights

Available in 6", 8" and 9" Length to match popular Soldier or Sailor course edge pavers

- 60 mm Height
- 6" - 1.5 Watt, 8" - 1.8 Watt, 9" - 2.5 Watt
- 6" - 35 Lumens, 8" - 45 Lumens, 9" - 60 Lumens
- Base feet to prevent lift from freeze/thaw
- Protective tear off strip for protection during installation
- Integrated Sealed Construction
- 2700 Kelvin Light Temperature LED Lamp



TS-MHPL-6 (\$51.80), TS-MHPL-8 (\$55.30) & TS-MHPL-9 (\$58.80) Modern Low Voltage LED Paver Lights

Available in 6", 8" and 9" Length to match popular Soldier or Sailor course edge pavers

- 60 mm Height
- 6" - 1.5 Watt, 8" - 1.8 Watt, 9" - 2.5 Watt
- 6" - 42 Lumens, 8" - 54 Lumens, 9" 72 Lumens
- Base feet to prevent lift from freeze/thaw
- Protective tear off strip for protection during installation
- Integrated Sealed Construction
- Modern version features 4000 Kelvin temperature



DOT LIGHTS FOR CONCRETE, STONE, WOOD, OR COMPOSITE DECKING



TS-15DOT-BRZ \$29.40 Traditional Low Voltage LED Dot Light

Easily install in concrete, stone, wood, or composite decking

- 60° Beam Spread LED Lamp
- 2700 Kelvin Light Temperature
- Installed with a 1" Drill Bit
- 1.5" Diameter Anodized Bronze Ring



TS-M15DOT-SS \$29.40 Modern Low Voltage LED Dot Light

Easily install in concrete, stone, wood, or composite decking

- 60° Beam Spread LED Lamp
- 4000 Kelvin Light Temperature
- Installed with a 1" Drill Bit
- 1.5" Diameter Stainless Steel Ring



TS-25DOTC-BRZ/SS \$29.40 NEW 2.5" In-Ground LED Dot Light

With Tru-Scapes Smart App Control Capability

- 1.5 Watts at 2700K
- 60° Beam Spread LED Lamp
- Adjustable Kelvin Temperature
- Installed with a 2" Drill Bit
- 2.5" Diameter Bronze or Stainless Steel Ring



TS-M25DOT-SS \$37.80 Modern Low Voltage LED DOT Light

Easily install in concrete, stone, wood, or composite decking

- 60° Beam Spread LED Lamp
- 4000 Kelvin Light Temperature
- Installed with a 2" Drill Bit
- 2.5" Diameter Stainless Steel Ring



TS-25DOT-BRZ \$37.80 Traditional Low Voltage LED Dot Light

Easily install in concrete, stone, wood, or composite decking

- 60° Beam Spread LED Lamp
- 2700 Kelvin Light Temperature
- Installed with a 2" Drill Bit
- 2.5" Diameter Anodized Bronze Ring



ACCENT/SPOT LIGHTS FOR TREES, PLANTS, HOUSES & LANDSCAPE FEATURES



TS-B102 \$77.00
Traditional Accent Light

Accent for key landscape features

- 40° Beam Spread LED Lamp
- 4 Watt
- 250 Lumens
- MR16 LED Lamp Included
- 2700 Kelvin Light Temperature
- Constructed of Solid Brass
- Optional LED lamp module with RGBCW capability plus dimming & Kelvin temperature adjustment



TS-B105 \$83.30
Wall Wash Light

Wide beam output – great for walls and landscape features

- 60° Beam Spread LED Lamp
- 5.5 Watt
- 450 Lumens
- MR16 LED Lamp Included
- 2700 Kelvin Light Temperature
- Constructed of Solid Brass
- Includes a frosted lens to reduce glare



TS-B106 \$127.40
High Power Accent Light

Great for larger mature trees & flagpoles

- 120° Beam Spread LED Lamp
- 8 Watt
- 900 Lumens
- PAR36 LED Lamp Included
- 2700 Kelvin Light Temperature
- Constructed of Solid Brass
- Optional LED lamp module with RGBCW capability plus dimming & Kelvin temperature adjustment



IN-GROUND WELL LIGHTS FOR TREES, PLANTS, HOUSES & LANDSCAPE FEATURES



TS-B201 \$103.60
High Power In-ground Well Light

Highlight houses, larger mature trees & flagpoles

- 120° Beam Spread LED Lamp
- 8 Watt
- 900 Lumens
- PAR36 LED Lamp Included
- 2700 Kelvin Light Temperature
- Constructed of a sealed composite housing with brass cowl and glass lens
- Optional LED lamp module with RGBCW capability plus dimming & Kelvin temperature adjustment



TS-B203 \$74.90
Sealed In-ground Well Light

Highlight focal point plants/trees or a wall, statue or fountain

- 60° Beam Spread LED Lamp
- 4 Watt
- 250 Lumens
- MR16 LED Lamp Included
- 2700 Kelvin Light Temperature
- Constructed of a composite housing with brass cowl and glass lens
- Optional LED lamp module with RGBCW capability plus dimming & Kelvin temperature adjustment



PATH LIGHTS FOR PATHWAYS, PATIO EDGES & FLOWER BEDS



TS-B301 \$84.00
Traditional Path Light

- 360° Beam Spread LED Lamp
- 3 Watt
- 300 Lumens
- G4 Bi-Pin LED Lamp Included
- 2700 Kelvin Light Temperature
- Constructed of Solid Brass
- Optional LED lamp module with RGBCW capability plus dimming & Kelvin temperature adjustment



TS-B302 \$84.00
Classic Path Light

- 360° Beam Spread LED Lamp
- 3 Watt
- 300 Lumens
- G4 Bi-Pin LED Lamp Included
- 2700 Kelvin Light Temperature
- Constructed of Solid Brass
- Optional LED lamp module with RGBCW capability plus dimming & Kelvin temperature adjustment



TS-B306 \$75.66
Modern Path Light

- 360° Beam Spread LED Lamp
- 3 Watt
- 300 Lumens
- G4 Bi-Pin LED Lamp Included
- 2700 Kelvin Light Temperature
- Constructed of Solid Brass
- Optional LED lamp module with RGBCW capability plus dimming & Kelvin temperature adjustment



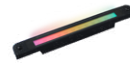


NEW TRU-SCAPES COLOR CONTROL

Tru-Scapes fixtures and lamps with App control are now available – offering RGB Color control as well as Kelvin (Warm - Cool White), Dimming, and Zone control via Bluetooth connection from your device.



RGBCW LAMPS



TS-A6000C-RBULB
Hardscape RGBCW Module
1.5 Watts/65 Lumens at 2700K



TS-360G4-C \$33.60
Path and Pillar RGBCW Lamp
1.5 Watts/110 Lumens at 2700K



TS-40MR16-C \$49.00
Accent Light RGBCW Lamp
5 Watts/420 Lumens at 2700K



TS-120PAR36-C \$73.50
High Power Accent & Well RGBCW Lamp
8 Watts/640 Lumens at 2700K

**Standard replacement lamps and modules available*

KEY FEATURES FOR FIXTURES

- Everything is included in the box – Fixture, LED Lamp, Gel filled wire nuts and heavy duty ground stake
- Tool-less design, simple hand assembly on site
- Directional Fixtures include a lock nut – essential for proper installation of the stake and fixture
- Lifetime Warranty on fixture socket and housing; Five year warranty in the finish and led lamp (*5 year warranty on all transformers and accessories)
- UL and ETL Listed; FCC Compliant



For additional resources and installation videos,
please visit Belgard.com/Lighting